



Customer:

evconnect



Business challenge:

EV Connect is a bold innovator in the EV market that produces modern EV charging solutions. The company faced inefficient energy consumption by EV charging stations, which caused high electricity bills for the charging site hosts as their end users.



Solution:

Intelliarts created a flexible and transparent energy management solution that helps users schedule power limits for EV charging stations. The key features include:

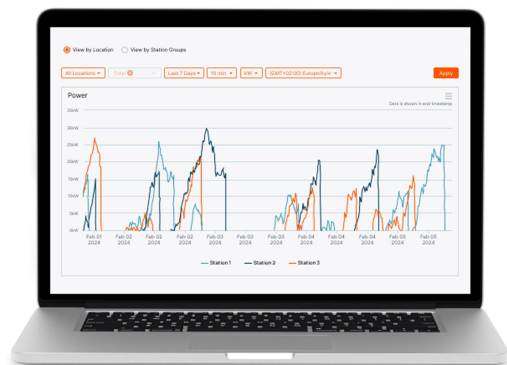
- Power management system for scheduling and monitoring energy use
- Data analytics dashboard for real-time insights on energy consumption
- Cost analysis tool to track and report electricity spending
- API integration for seamless automation and flexibility

By leveraging advanced algorithms, the system automatically adjusts energy load based on grid dynamics and renewable energy availability. We also ensured compliance with smart charging regulations, including random delays and off-peak charging times, helping our partner meet UK regulations and protect the power grid.



Business outcomes:

The solution ensures the right amount of energy being spent at the right costs. So the site hosts can minimize energy consumption at costly peak hours and meet utility power constraints if any. EV Connect then gets more loyal customers and prolongs the lifetime of their assets and infrastructure.



Read the full success story about [smart power management system development](#).

Partner with Intelliarts to develop powerful software solutions tailored to your business needs.

Let's talk